

## ACCESS THE PLATFORM

[Approach](#)[Platform](#)[About](#)

## MENU

**Imagine a world where all learners have an opportunity to thrive.**

At LRNG, we believe learners can best define their purpose when they are at the center of learning. LRNG expands access to meaningful employment and education by providing engaging experiences at the intersection of work and learning, and collaborating with communities to create conditions for learner success.

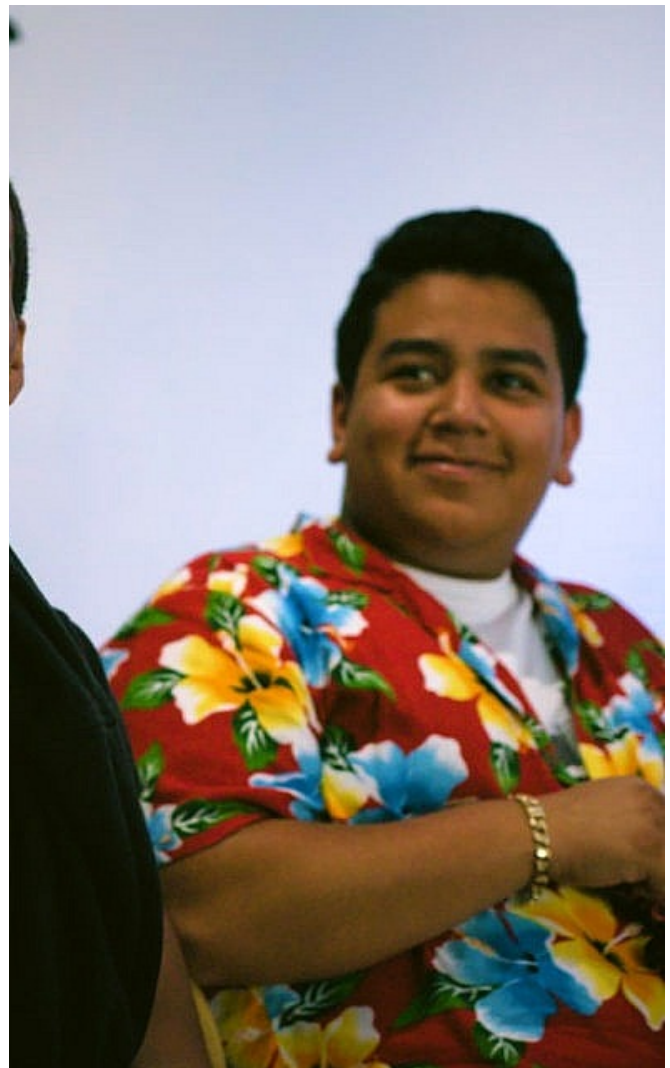
As the community impact arm of SNHU, LRNG works with local government, employers, the public library systems, community colleges, or other local partners to open the door to new opportunities for residents and help close workforce gaps. Major national employers such as Amazon Web Services and Unity Technologies are joining in the effort, assisting in various ways with talent development needs.

At a time when many believe higher education inhabits the rigidly defined space between high school and workforce, we are redefining the boundaries and creating personalized pathways that give learners just the right learning, at just the right time, at just the right place in their lives.

Our highly [engaging platform](#), wraps together online and in person experiences, into playlists that equip learners with tangible skills and understandings that they can apply in academic and career settings.

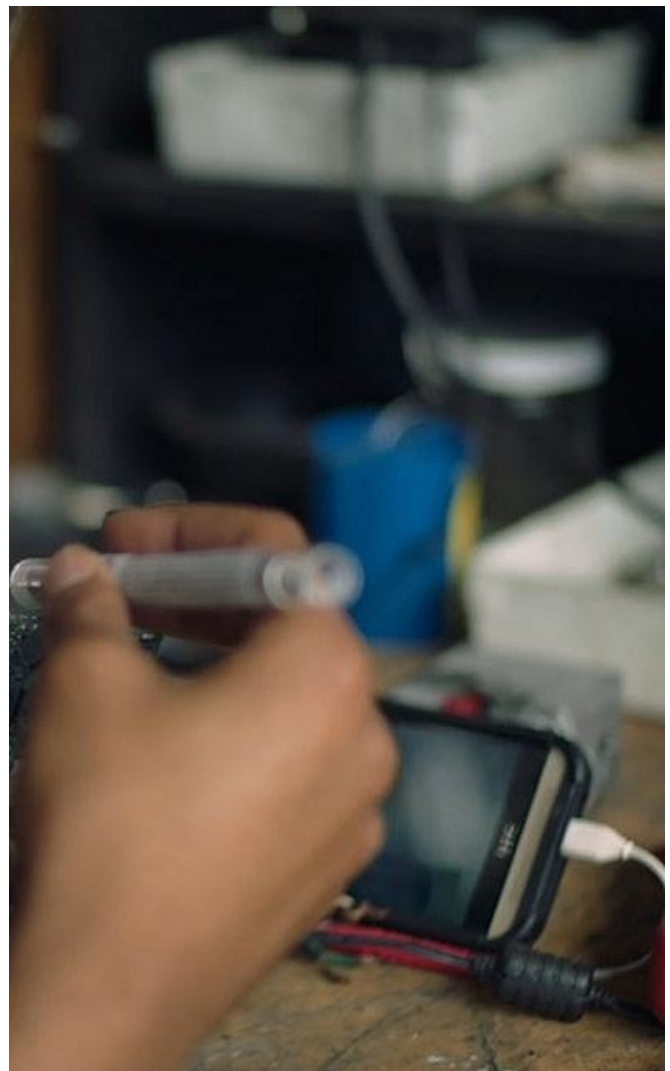
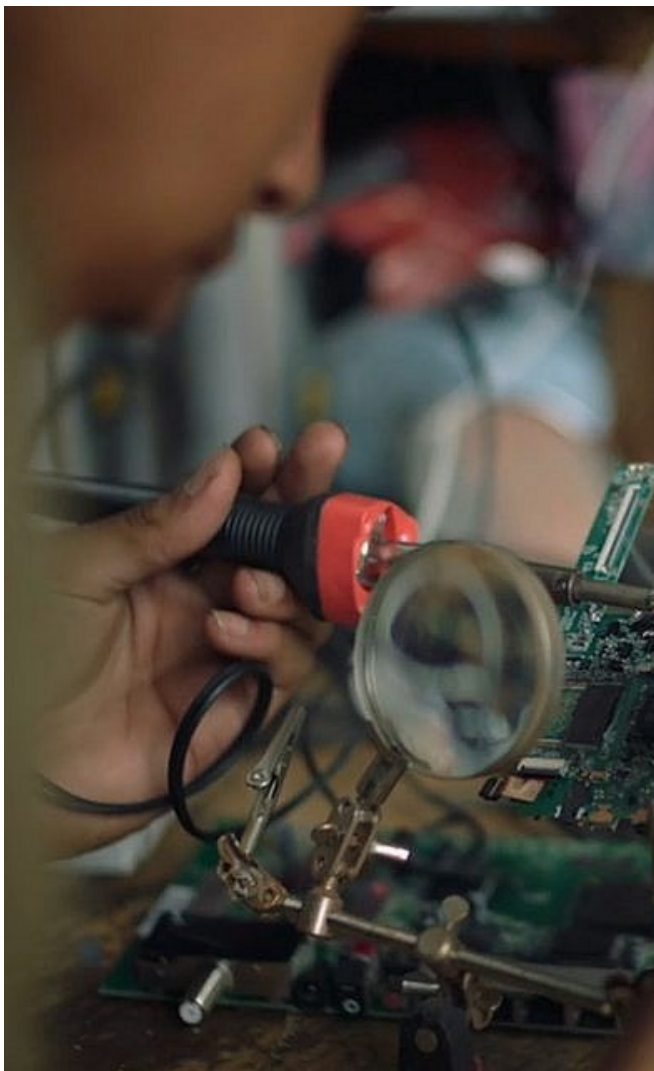
## OUR WORK ACROSS CITIES

SNHU and LRNG to work together with young people, cities, employers and community-based partners to identify workforce and learning needs and build digital badges, learning playlists and entire degree programs based on the needs of the youth and the needs of each partnering city.



*"We know that education is firmly linked to economic growth, so we are thrilled that SNHU and LRNG are bringing workforce-relevant solutions to Birmingham to help people across the city gain the skills they need to succeed in our changing workforce... This partnership has the potential to transform lives and fuel economic growth throughout our entire community." — Randall Woodfin, Mayor of Birmingham, Alabama*

Together with the City of Birmingham and Birmingham City Schools, LRNG is working to create a learning ecosystem that helps learners find and explore their interests and passions, then open the door to related career opportunities and pathways. LRNG is the online learning partner for Birmingham Promise and Birmingham Education Foundation. Through specially curated playlist and project-based curriculum, learners are earning skills needed to succeed in high-quality careers that exist or will exist as the city grows. Thus, creating a better prepared workforce, and overall a healthier society in Birmingham.



*“SNHU – LRNG is a key partner in New Orleans’ efforts to build an ecosystem of cost effective, connected pathways between K-12, higher education, and workforce. These pathways will prepare our public high school graduates for good-paying jobs by providing affordable opportunities to earn valued credentials and degrees aligned with employer required skills.” – Leslie Jacobs, Co-founder, Belltower New Orleans*

LRNG is cohering the mutually supporting components of a city-wide effort to move low income youth and young adults into work and post-secondary learning in New Orleans. The NOLA ecosystem is distinctive for several reasons and provides a unique opportunity to inform the development of a scalable model. While we usually start with our platform and earning badges, in NOLA we are starting with College for America (CfA) as our entry point. NOLA is also the first geographic location to design hand-offs between high school dual and concurrent enrollment programs and “Community Partner” programs supporting high school graduates in the CfA program.



## BADGES TO CREDIT PILOT

During the summer of 2019, LRNG launched a pilot project to translate badges into credit at Southern New Hampshire University. Working with youth, LRNG is gaining more understanding of how to engage and support them as they traverse the pathway toward college credit. That learning will then be used to expand this badges to credit work to other learners in cities across the nation.

309 W. Washington, Unit 1050  
Chicago, IL 60606

888-960-LRNG [5764]

[support@lrng.org](mailto:support@lrng.org)

Stay informed! For updates on LRNG, add your email below.

EMAIL ADDRESS

**SIGN UP**

## CONTACT US

[TERMS](#) [PRIVACY](#)  
POWERED BY **SNHU**  
[CONNECT WITH US](#)