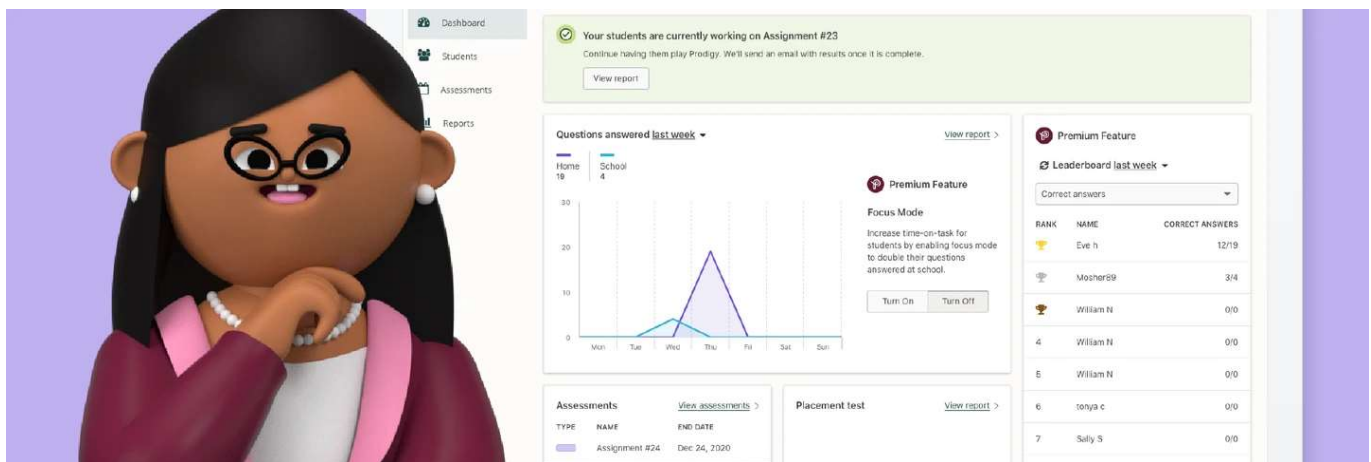


Prodigy Feature Update: New Teacher Dashboard

August 13, 2020

All Posts



Written by Richie Saltzman

Category

Update

Contents

[Leaderboard widget](#)

[Questions answered widget](#)

[Active assessments widget](#)

[Placement Test widget](#)

[Weekly skill activity widget](#)

[Send Prodigy Math Game home](#)

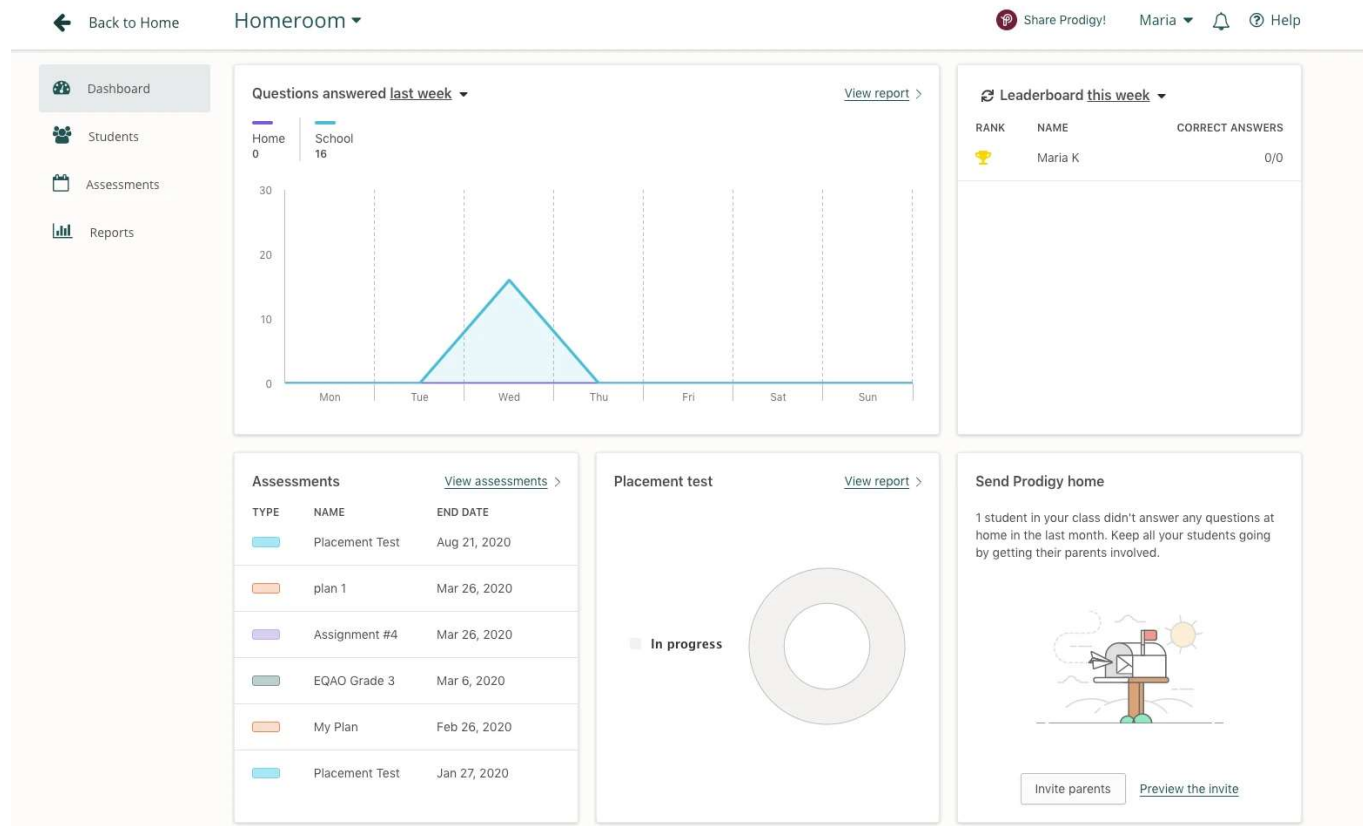
[Skip to Content](#)



We've made some very exciting changes to the **Prodigy teacher dashboard** for the upcoming school year. This new enhanced interface for teachers and parents will provide you with insight into your students/children's recent usage, performance, trouble spots as well as quick overviews for assessments and Placement Test progress.

Your dashboard comes complete with five widgets to keep you up to date on how your students are performing in the world of Prodigy! And don't forget — your Prodigy teacher account is free to access!

[Sign up now](#)



Leaderboard widget


This widget is designed to provide you with an overview of the number of questions correct out of total questions answered by your students/child within the selected time frame. Use the drop down menu to view student achievement:

[Skip to Content](#)




- This week

- Last week

You can cycle through all of your students using the arrows on the bottom right.

 **Leaderboard** last week ▼

Correct answers ▼

RANK	NAME	CORRECT ANSWERS
	Eve h	12/19
	Mosher89	3/4
	William N	0/0
4	William N	0/0
5	William N	0/0
6	tonya c	0/0
7	Sally S	0/0
8	rob m	0/0

Skip to Content

<

1 of 4

>

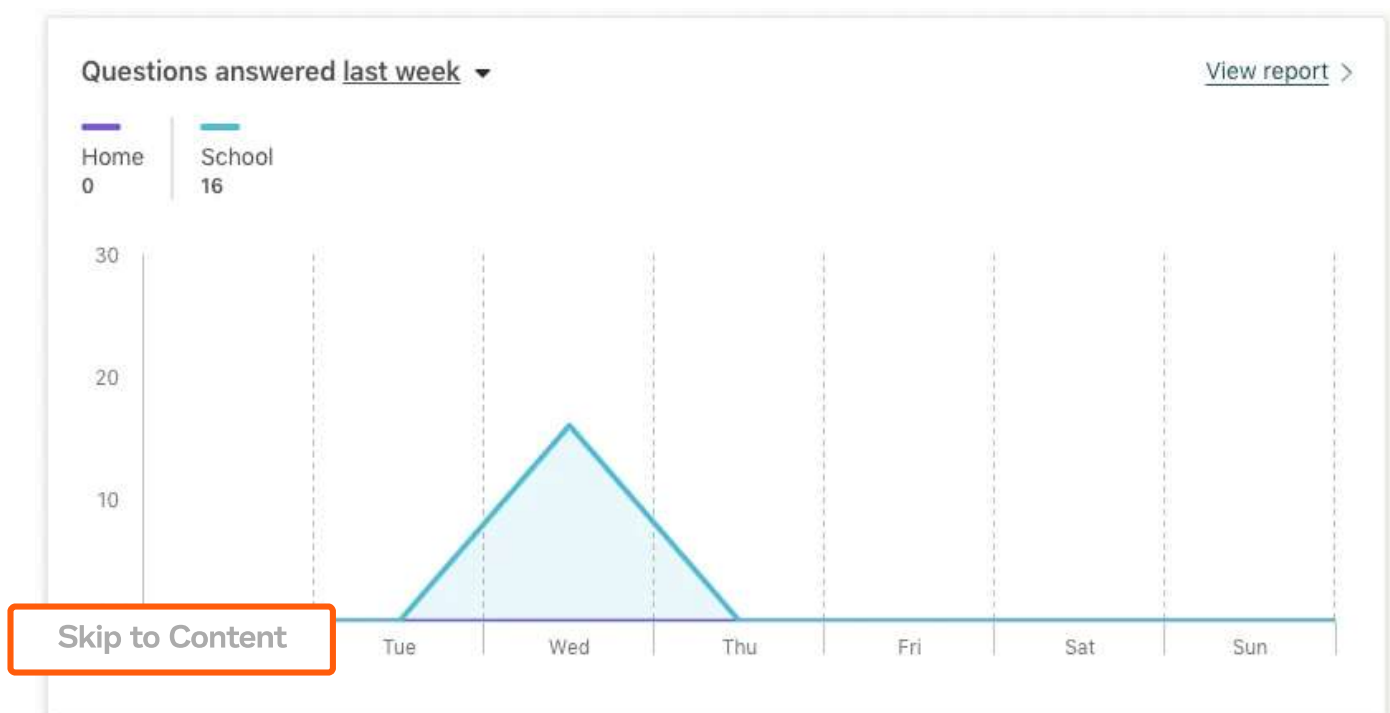
This is a great way to not only find out who's been using Prodigy the most, but also to determine who has not been using the program within the selected time frame.

Questions answered widget

This widget will give you an overview of how many questions your class has answered, broken down by day and time of day. Hovering your mouse cursor over any individual day in the graph will give you total questions answered by the class for that day. Each day is broken into two categories:

- **In class** — Any questions answered from 8am to 3pm
- **At home** — Any questions answered from 3pm to 8am

Toggle between statistics from the current week and last week using the drop-down menu.



Active assessments widget

This widget gives you a glance at what assessments (*Assignments*, *Plans* and *Test Preps*) are currently active for your account, how your students are performing on them, what date the assessments end and what percentage of the students have completed the assessment.

Toggle through active assessments using the drop-down menu and click the link at the bottom of the widget to view the full report for the selected assessment.

Assessments		View assessments >
TYPE	NAME	END DATE
	Assignment #24	Dec 24, 2020
	RTI	Dec 16, 2020
	Remediation	Dec 10, 2020
	SBAC Grade 3	Dec 4, 2020
	Assignment #18	Nov 26, 2020
	Quotients	Nov 25, 2020


[Log In](#)

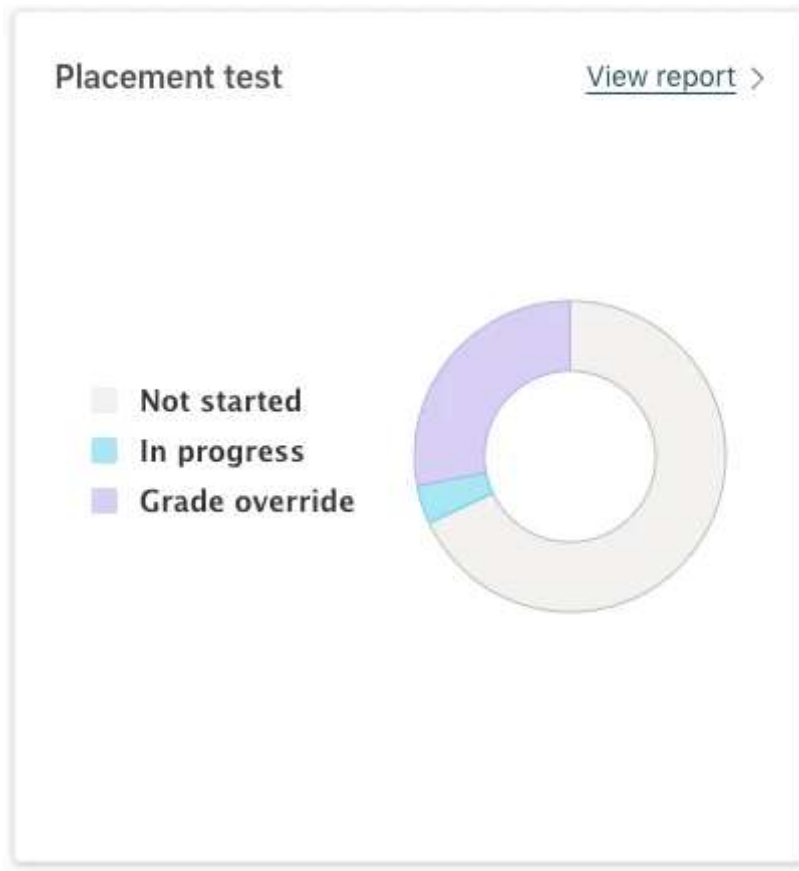
Placement test widget

When students first start exploring the Prodigy world, they'll complete a diagnostic test to determine their grade level.

This widget shows you which percentage of your class are currently working through the Placement Test and, for those that have completed it, which grade your students were placed in. Hover over each section of the chart to see where students have been placed.

[Skip to Content](#)

runs automatically when students first log in, as well as every
ary.



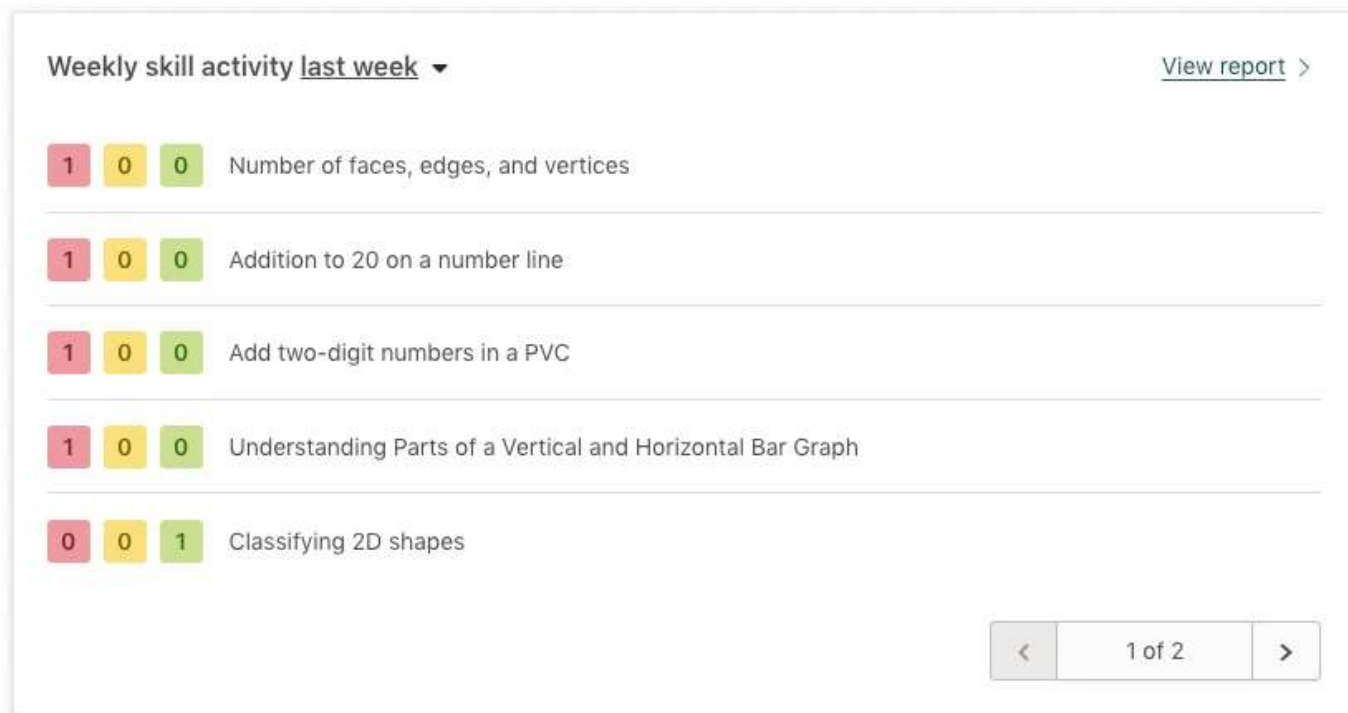
Weekly skill activity widget

Get an at-a-glance understanding of which skills your students practiced and track their

Skip to Content concepts.

Toggle between this week and last week using the drop-down menu, or select *View report*

to see a comprehensive breakdown of student skills, sample questions and where students are excelling or struggling.



Send Prodigy Math Game home!

Did you know your students can play Prodigy from anywhere, whether they're learning at home or at school?

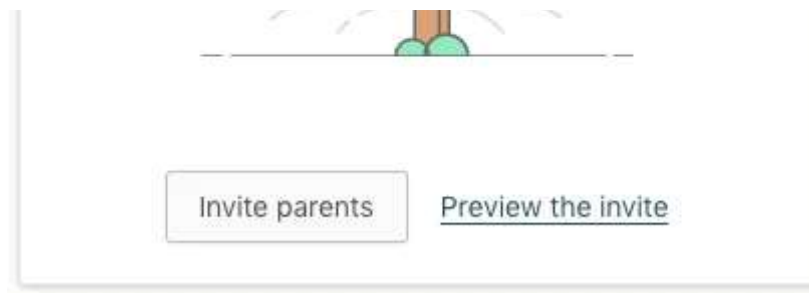
Now you can send parent letters from your dashboard and invite them to sign up for a Prodigy account. A parent account is free to create and gives parents their own dashboard to monitor their child's math progress. Parents can also upgrade to our [Premium Memberships](#), which offer extra in-game content for their child as well as additional learning materials to help with home learning.

Send Prodigy home

1 student in your class didn't answer any questions at home in the last month. Keep all your students going by getting their parents involved.

[Skip to Content](#)





Use this widget to enter parent emails and invite them to sign up for Prodigy. When classroom learning is connecting with home learning, there's no telling what students can accomplish.

Viewing the dashboard on a regular basis is a great way to understand where students excel and fill learning gaps. Use Prodigy's powerful teacher tools to help make informed decisions about lesson planning, differentiation and test prep.

Sign up for your free teacher account today!

[Sign up now](#)

[Skip to Content](#)



Prodigy

[About Us](#)

[Careers](#)

[Culture](#)

Math Education

[Prodigy Math Game](#)

[Memberships](#)

[Math Tutoring](#)

More Info

[Blog](#)

[Research](#)

[Curriculum](#)

Support

[Parents](#)

[Teachers](#)

[Students](#)



[Privacy Policy](#) [Terms of Use](#)