

*“I have students in my class who are falling behind.”*

*“I can’t tell if all of my  
students understood the  
lesson.”*

*“Some of my students  
need more time to  
understand a new topic.”*

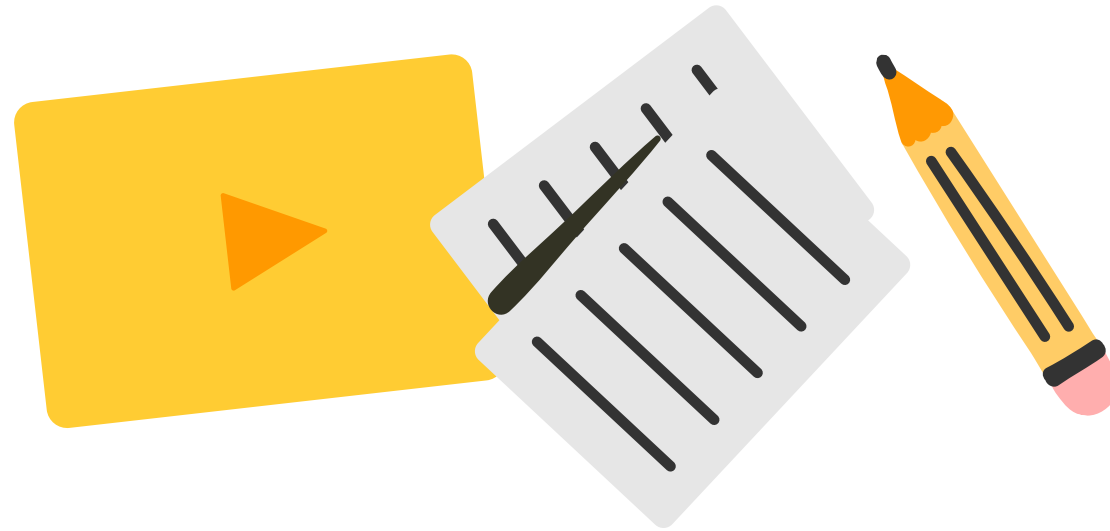
*“My students are visual learners who love YouTube.”*



# edpuzzle

Make any video your lesson

# What is Edpuzzle?



Choose any [video](#) from YouTube, embed your own [assessment](#) questions, and track your [students'](#) [progress](#).

It's easy and powerful!

# Why Edpuzzle is your new best friend



- Your students watch the video at their **own pace**.
- You hold every student **accountable**: see who's watching and who answers the questions. They won't be able to skip ahead or open other tabs.
- Get 100% **student participation**!

# When do you use Edpuzzle?

## In-class



Rotation stations

Individual work

Listening  
comprehension

## Homework



Complement your lesson

Demonstrate math problems

Introduce grammar & vocab

Prepare for class discussion

## Review



Key unit concepts

Exam study guides

Classroom/lab rules



# How can you view Edpuzzle?

## Classic



Students watch the video individually

They work independently and at their own pace

Perfect for rotation stations or flipped classroom

## Live Mode



You project the video in front of the class

Students answer on their own devices in real time

You get live feedback to spark in-class discussion

# What types of classes can you create?

## Classic Class



Students need to log in or sign up

Track students' progress across  
all your videos

Perfect if you can't live without  
videos in your lessons!

## Open Class



Students don't need an account

See students' progress one video  
at a time

Perfect for demos, quick practice,  
and elementary students!

# Don't reinvent the wheel – save time!

## Share

Use a ready-made lesson from another teacher

## YouTube

Search for any YouTube video & copy it to your content

## Upload

Record & upload your own teaching videos

# Step by step

1. Go to [edpuzzle.com](https://edpuzzle.com).
2. Sign up as a [teacher](#).
3. Connect your [school](#) & [department](#).
4. Follow the tutorial to [create your first video lesson!](#)

# Edpuzzle LMS integrations

Set up Edpuzzle so your students can watch right from your LMS!

[Google Classroom](#)

[Canvas](#)

[Schoology](#)

[Moodle](#)

[PowerSchool](#)

[Blackboard](#)

# Play time!

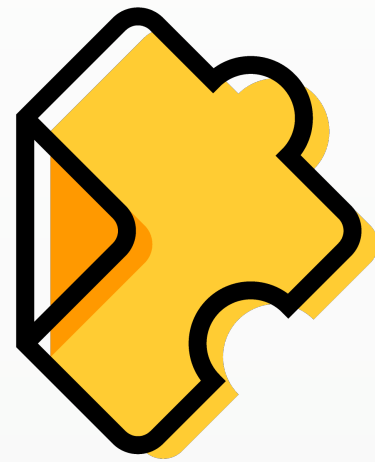


# Want to learn more?

[go.edpuzzle.com/OnlinePD](https://go.edpuzzle.com/OnlinePD)

Use Edpuzzle to get [officially certified](#) in topics like:

- Edpuzzle Coach
- Flipped Learning
- Google Tools
- Tech Integration
- Project-Based Learning (PBL)



edpuzzle